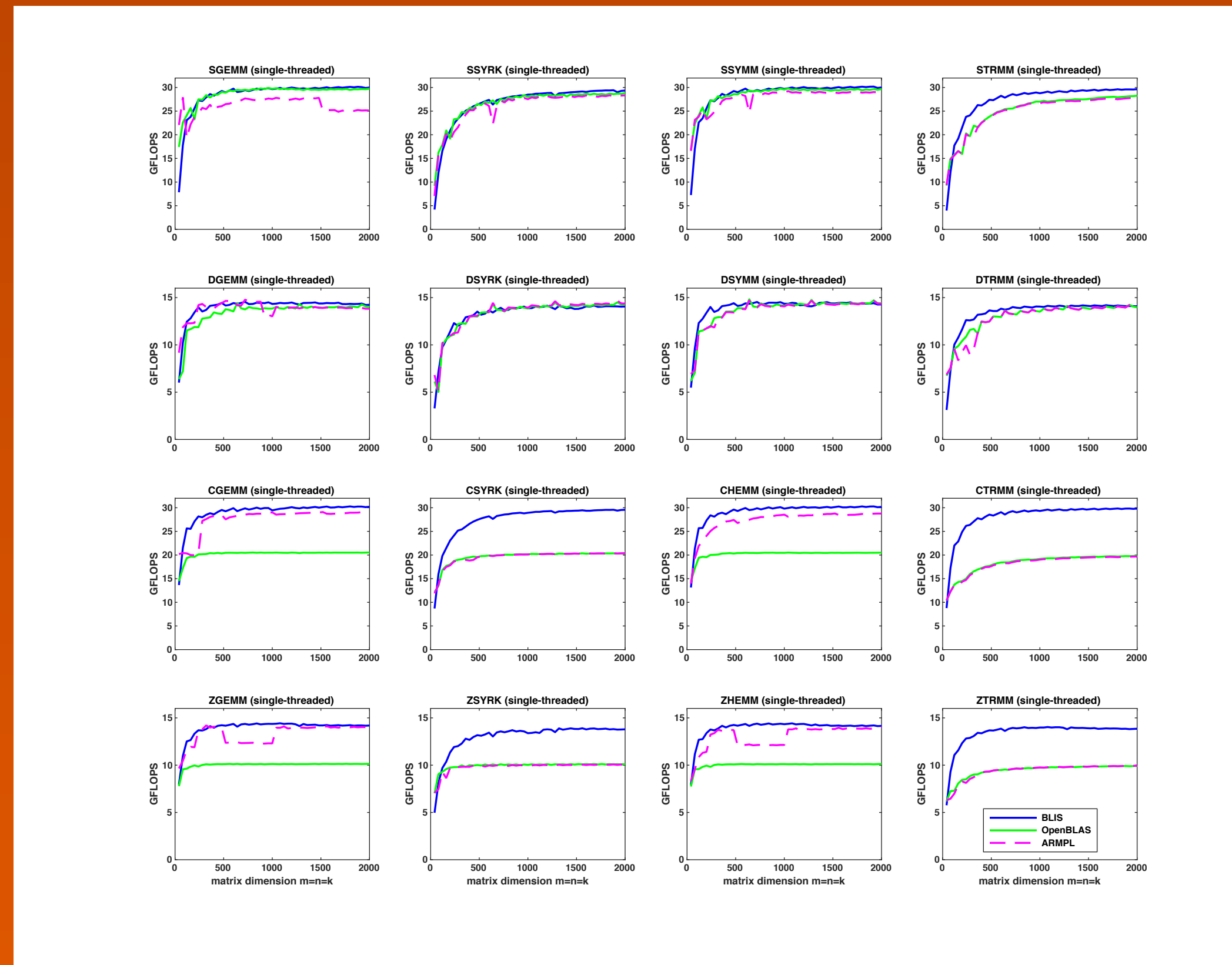




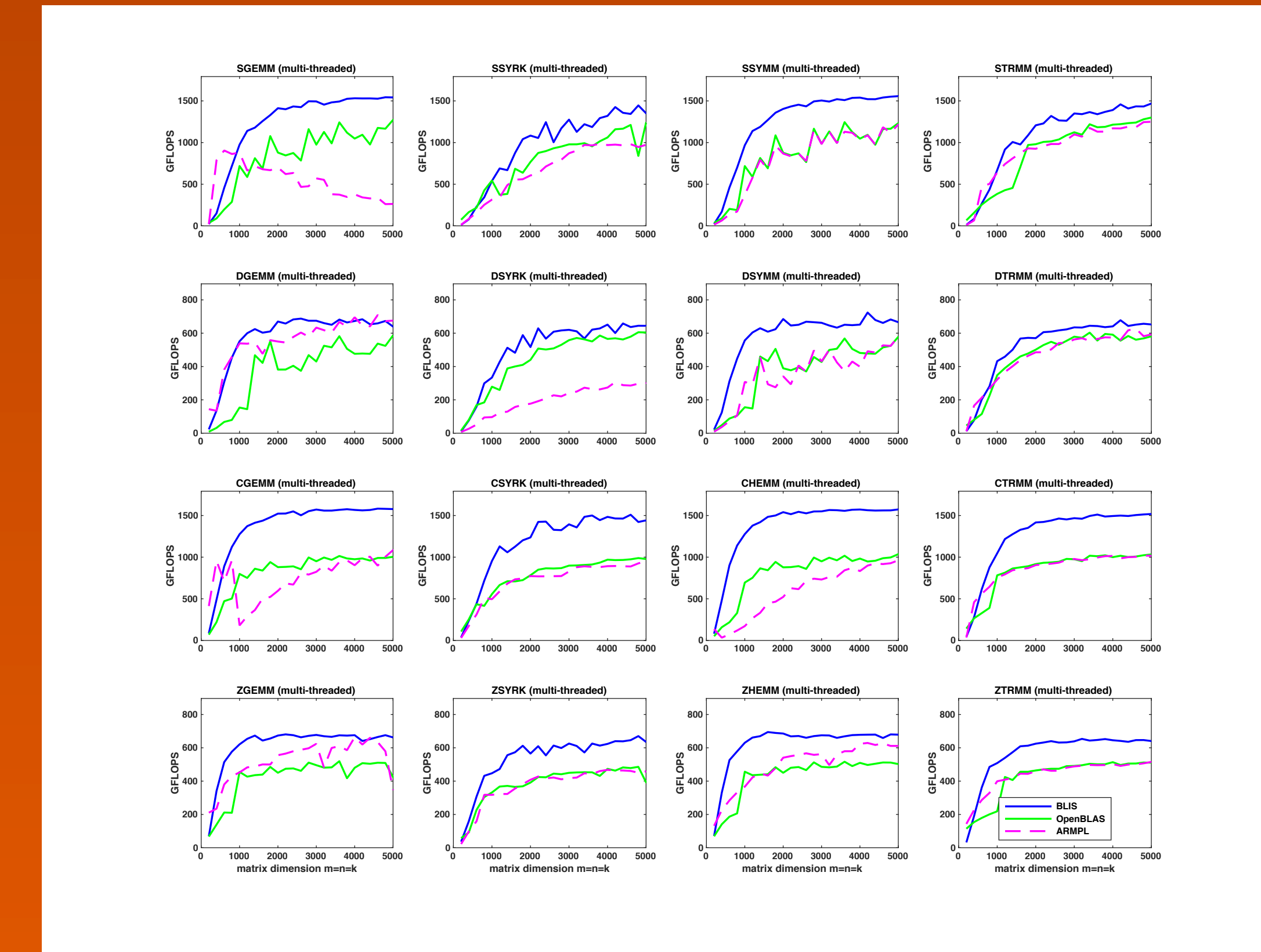
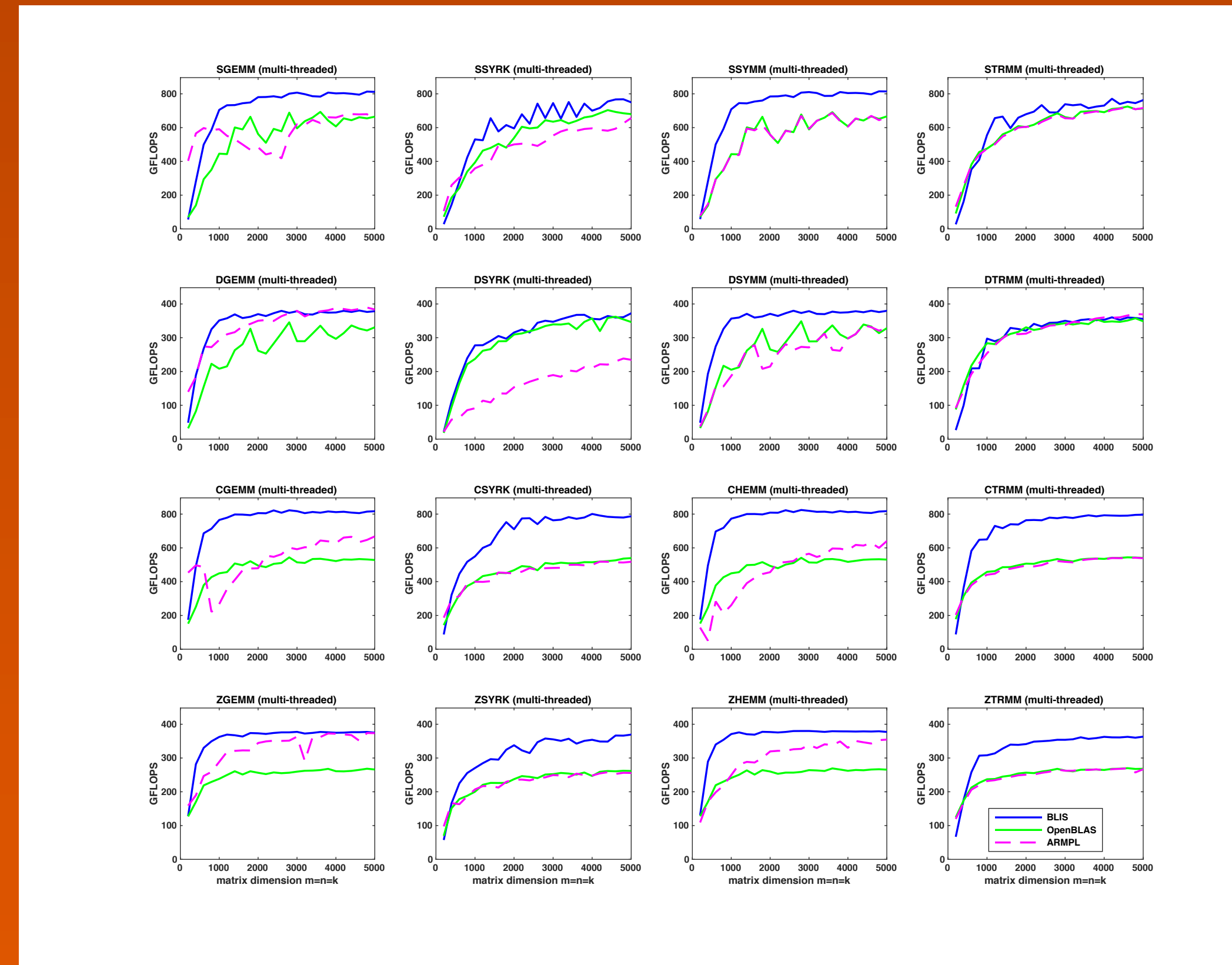
BLIS Performs

ThunderX2 28 Cores (1 Socket)

Single Core

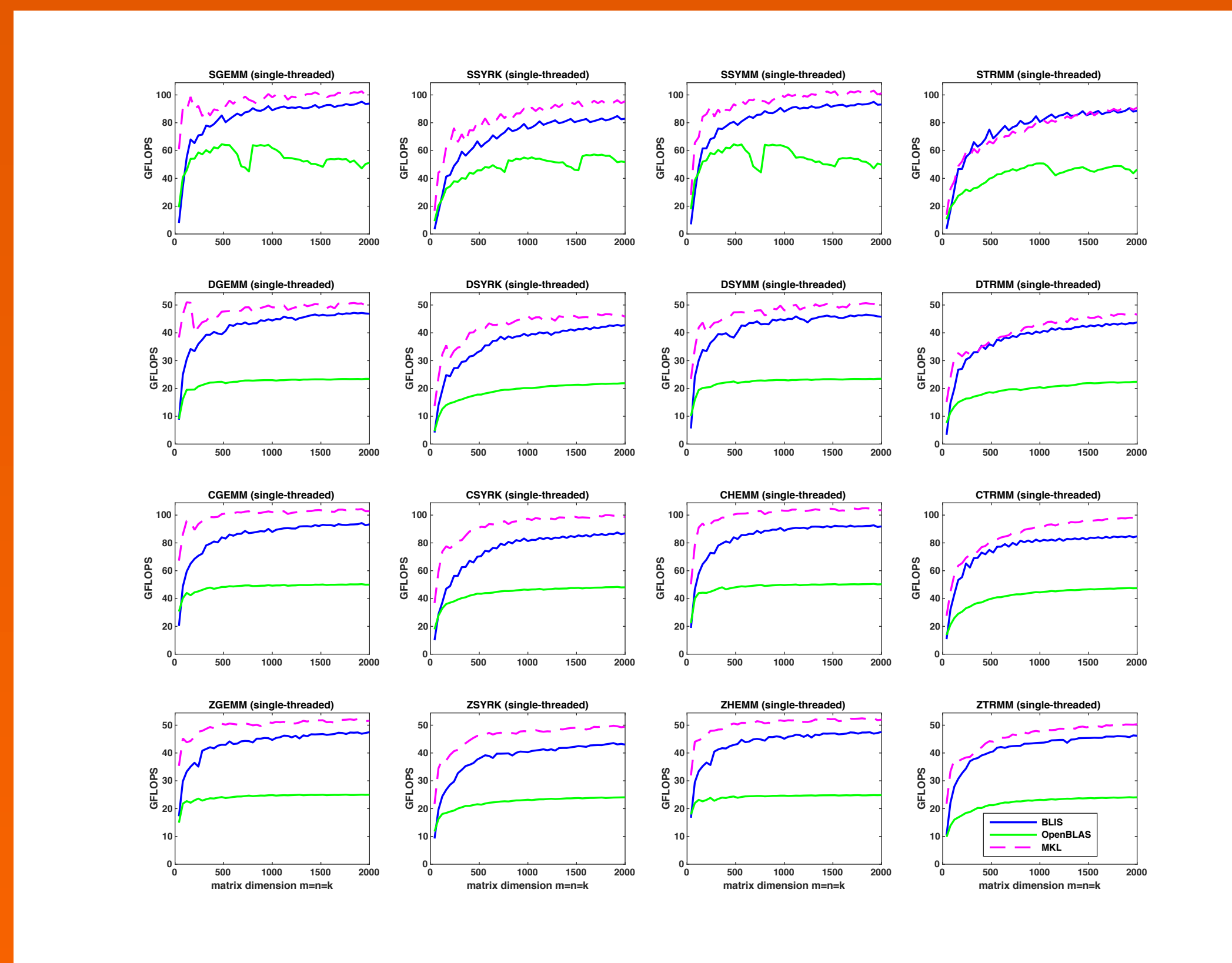


56 Cores (2 Sockets)

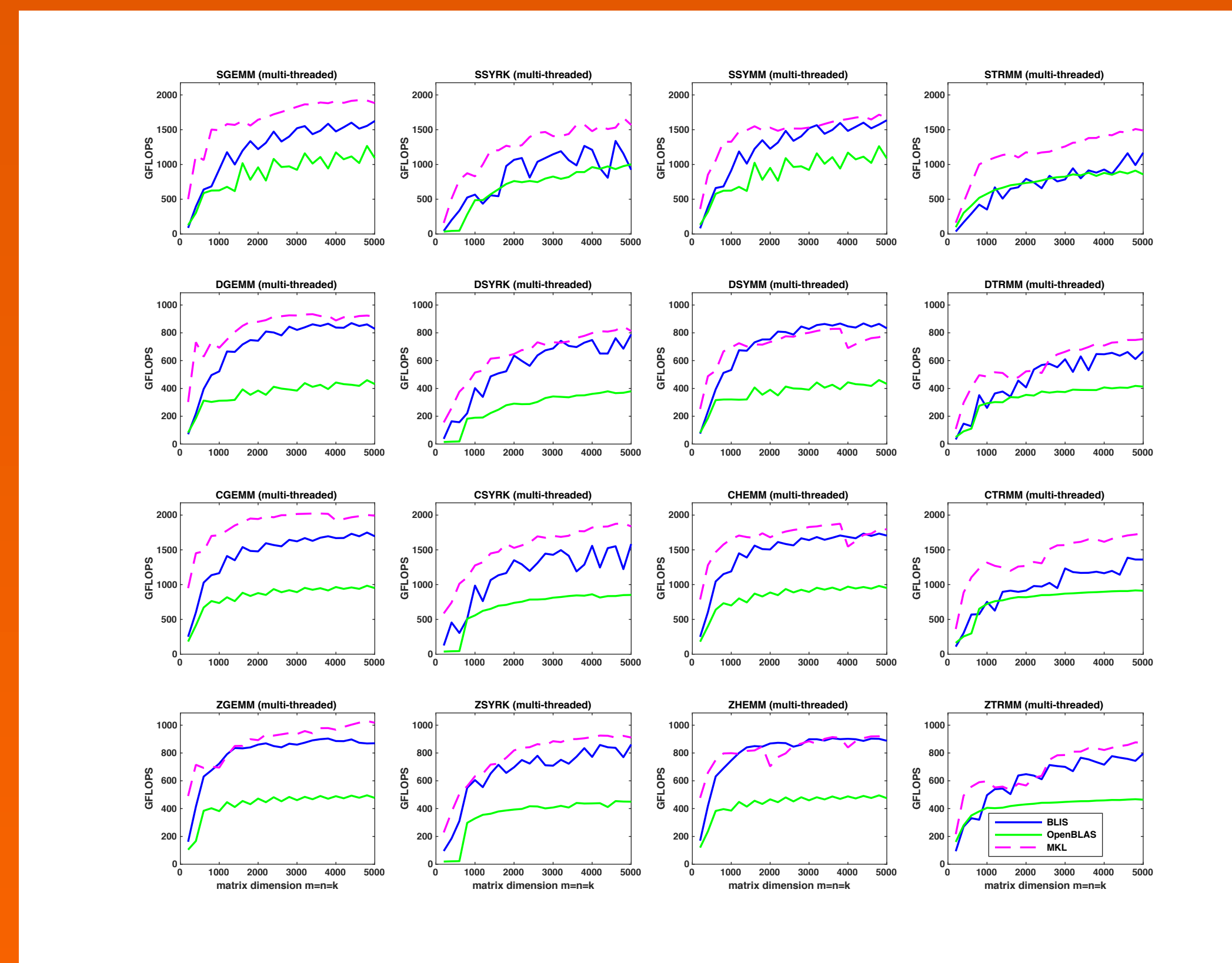


SkylakeX (AVX-512) 20 Cores (1 Socket)

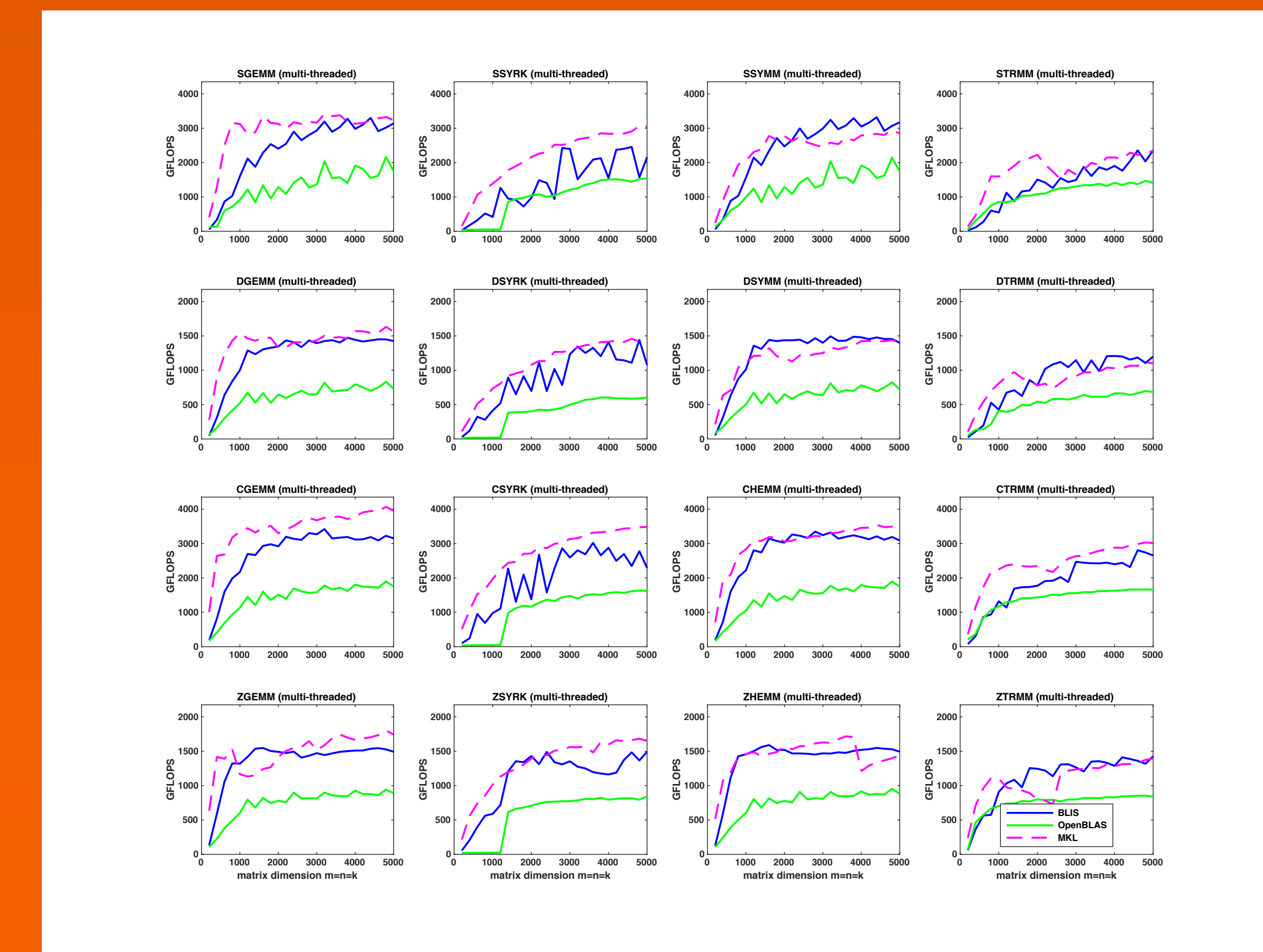
Single Core



20 Cores (1 Socket)

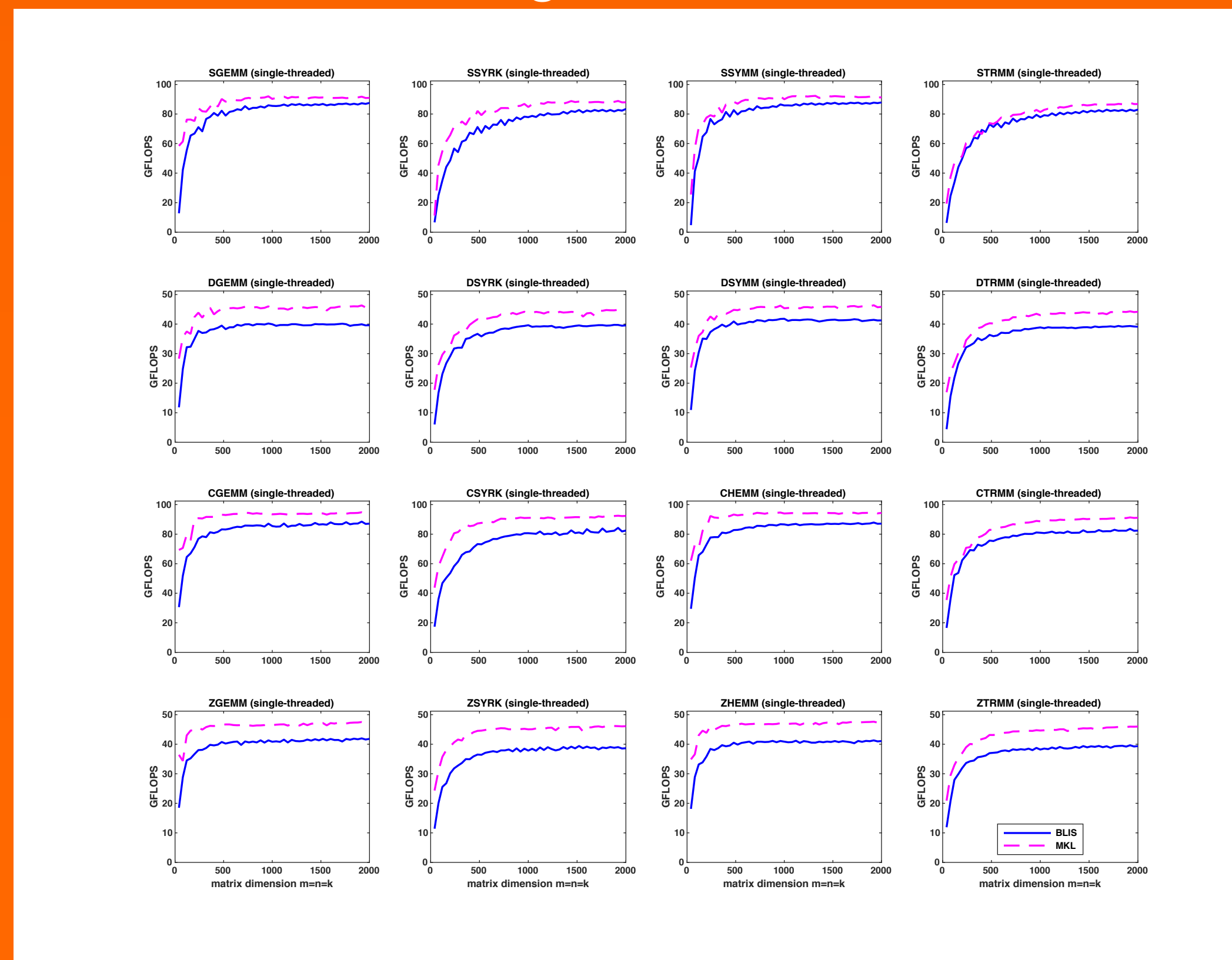


40 Cores (2 Sockets)

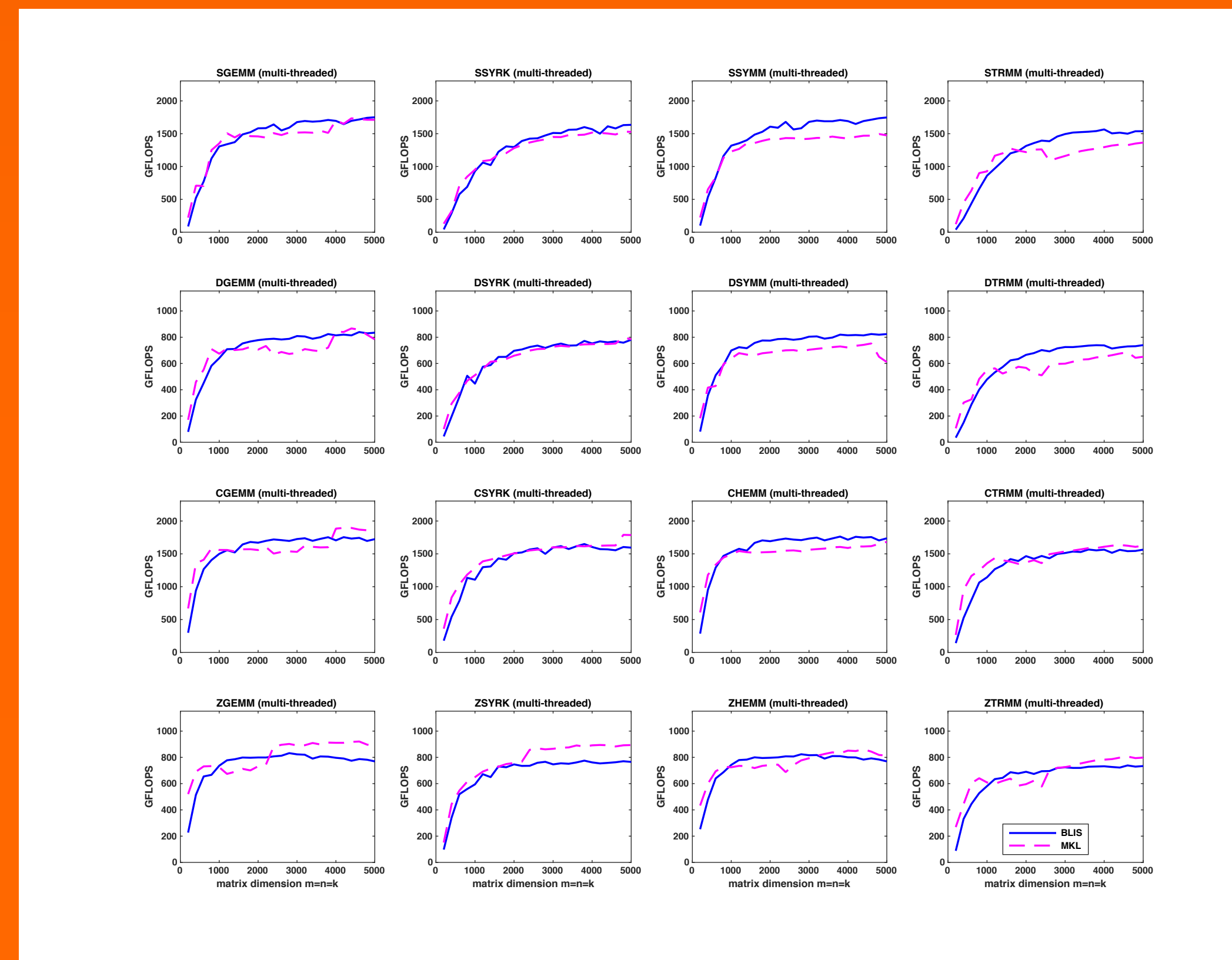


Haswell 12 Cores (1 Socket)

Single Core



12 Cores (1 Socket)



24 Cores (2 Sockets)

