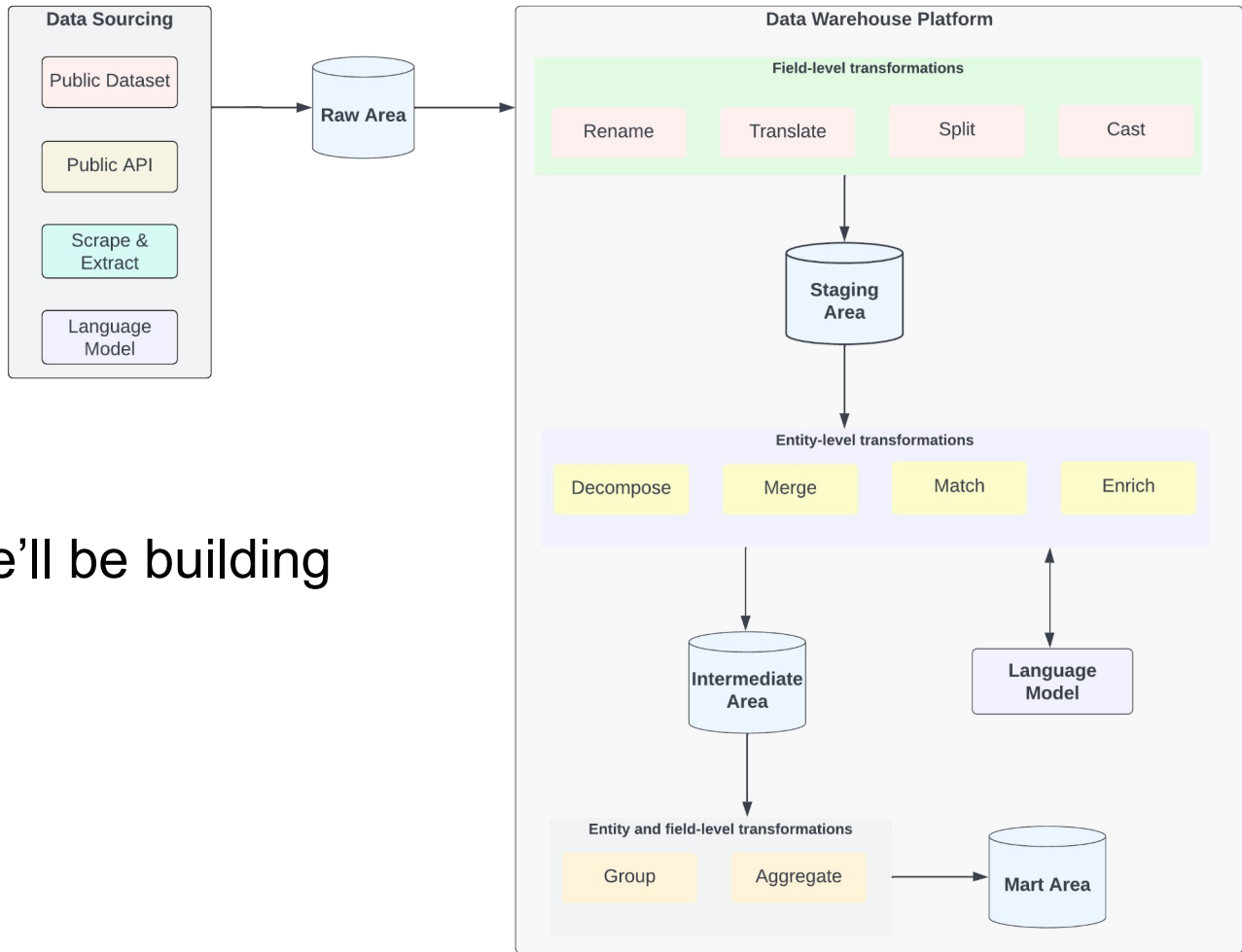


Course Intro

Foundations of Data Warehousing (CS 378)
First Edition

August 30, 2024



What we'll be building

How this class will work & my expectations of you

- A major portion of most class periods will be spent on project work.
- You will work collaborative with your partner on each project.
- You and your partner should block off time outside of class to finish off any remaining aspects of the project.
- If you have to miss a class, you should email me, the TA, and your partner in advance.
- If you are having some collaboration challenges with your partner, please email me and/or come to office hours.
- Assignments will come with code samples to help you get started.
- Assignments won't come with a complete playbook, you are expected to figure some things out on your own.
- The complete rubric will be available only after an assignment has been graded.
- You will have 7 days to resubmit if you lost points as long as you did the work in the first place.
- Our week-by-week schedule is tentative. It may be adjusted based on the needs of the class.
- Please use Ed for most outside class communication. However, be careful not to overshare your work.
- As this is a new course, please share your feedback with me early and often via email and/or office hours.